

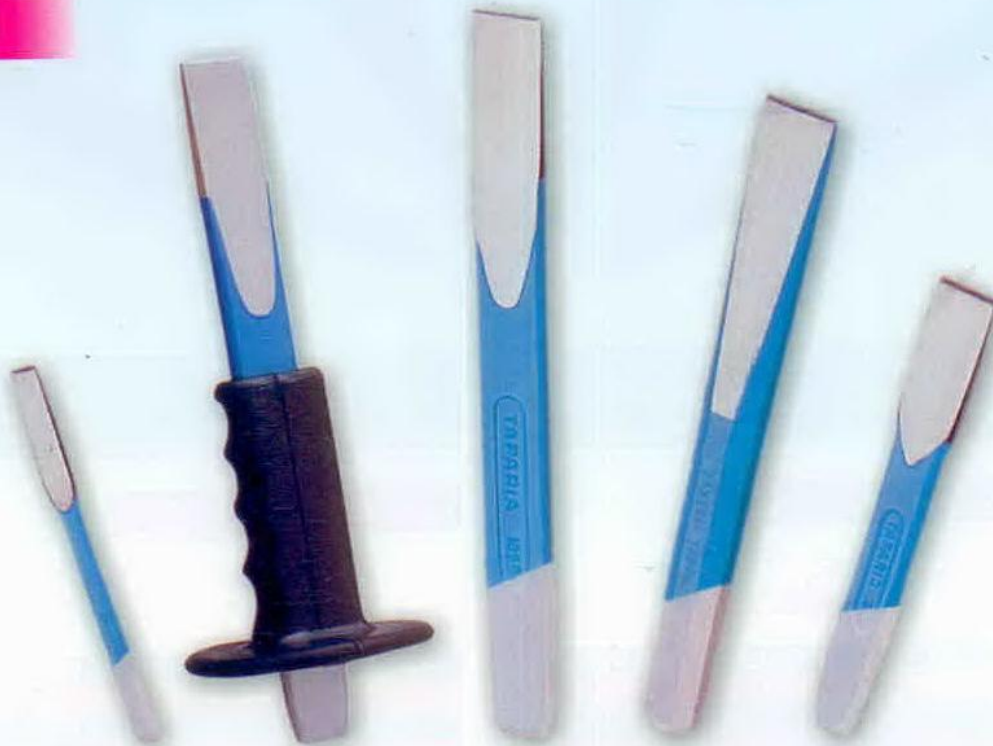


# TAPARIA TOOLS LTD.

AN ISO-9001 COMPANY

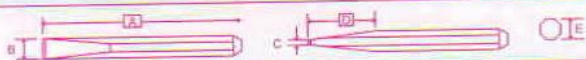


## CHISELS



- ★ Made from high grade Steel, forged and ground.
- ★ Differential heat treatment for cutting edge, and striking end, ensures long life.
- ★ Bright Blue Painted finish.

### OCTAGONAL CHISEL



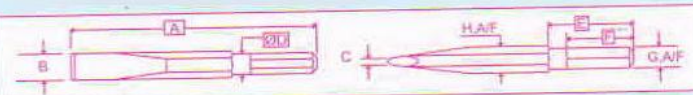
| PROD. NO | A   | B  | C    | D   | E      | WT. GMS |
|----------|-----|----|------|-----|--------|---------|
| 101      | 135 | 9  | 1.50 | 40  | 9 A/F  | 58      |
| 102      | 150 | 16 | 3.25 | 70  | 12 A/F | 134     |
| 104      | 200 | 22 | 3.75 | 90  | 16 A/F | 320     |
| 105      | 200 | 25 | 4.00 | 100 | 19 A/F | 365     |
| 106      | 250 | 30 | 4.50 | 120 | 22 A/F | 710     |
| 107      | 300 | 32 | 4.75 | 130 | 22 A/F | 904     |

### FLAT CHISEL



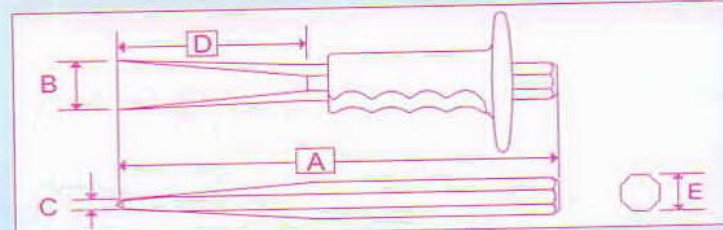
| PROD. NO | A   | B  | C   | D  | E  | WT. GMS |
|----------|-----|----|-----|----|----|---------|
| 1046     | 150 | 20 | 3.0 | 57 | 17 | 10.00   |
| 1048     | 200 | 25 | 3.5 | 83 | 21 | 11.00   |
| 1059     | 235 | 24 | 2.5 | 90 | 24 | 6.35    |

### PNEUMATIC CHISEL



| PROD. NO | A   | B  | C   | Ø D   | E  | F    | G, A/F | H, A/F | WT. GMS |
|----------|-----|----|-----|-------|----|------|--------|--------|---------|
| 1306     | 150 | 22 | 3.0 | 17.25 | 65 | 46.5 | 14.8   | 19     | 254     |
| 1307     | 175 | 22 | 3.0 | 17.25 | 65 | 46.5 | 14.8   | 19     | 302     |
| 1308     | 200 | 22 | 3.0 | 17.25 | 65 | 46.5 | 14.8   | 19     | 320     |
| 1309     | 225 | 22 | 3.0 | 17.25 | 65 | 46.5 | 14.8   | 19     | 430     |

### FLAT OCTAGONAL CHISEL (RUBBER GRIP)



| PROD. NO | A   | B  | C   | D   | E  | F    | WT. GMS |
|----------|-----|----|-----|-----|----|------|---------|
| 106 R    | 250 | 30 | 4.5 | 120 | 22 | --   | 820     |
| 1059 R   | 235 | 24 | 2.5 | 90  | 24 | 6.35 | 350     |



Made out of high grade Chrome Steel accurately machined and heat treated. Deep knurling on the Body ensures firm grip. Black phosphate finish.

### CENTRE PUNCH & DRIFT PUNCH



| PROD. NO            | A   | B    | Ø C | Ø D | WT. GMS |
|---------------------|-----|------|-----|-----|---------|
| 1884                | 100 | 26.5 | 3   | 8   | 35      |
| 1984                | 100 | 33   | 4   | 10  | 50      |
| 1985                | 125 | 40   | 5   | 12  | 80      |
| 1986                | 150 | 50   | 5   | 12  | 100     |
| DRIFT PUNCH<br>1004 | 100 | 38   | 3   | 10  | 45      |

### DRIFT, CENTRE & LEATHER PUNCH SET

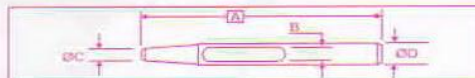
| PROD. NO | CONTENTS                                    |
|----------|---|
| DCLP 7   | 1004, 1884, 1984, 1985,<br>1786, 1787, 1788 |

### PIN PUNCH SET

| PROD. NO | LENGTH  | CONTENTS                              |
|----------|---------|---------------------------------------|
| PPI 6    | 100 mm. | PP24, PP32, PP40,<br>PP48, PP55, PP63 |
| PPIL 4   | 150 mm. | PP40L, PP48L, PP55L, PP63L            |

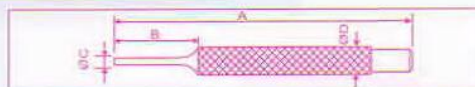
Made out of high quality Chrome Steel, precision machined and heat treated to punch perfect holes in rubber, leather, carpet, etc. Black phosphate finish.

### LEATHER PUNCHES



| PROD. NO | A   | B    | Ø C  | Ø D | WT. GMS |
|----------|-----|------|------|-----|---------|
| 1786     | 100 | 6.5  | 7.0  | 12  | 60      |
| 1787     | 100 | 8.5  | 9.0  | 13  | 65      |
| 1788     | 100 | 10.5 | 11.5 | 14  | 70      |

### PIN PUNCHES



| PROD. NO | A   | B  | Ø C  | Ø D | WT. GMS |
|----------|-----|----|------|-----|---------|
| PP 24    | 100 | 35 | 2.4  | 10  | 39      |
| PP 32    | 100 | 35 | 3.2  | 10  | 40      |
| PP 40    | 100 | 35 | 4.0  | 10  | 41      |
| PP 48    | 100 | 35 | 4.8  | 10  | 42      |
| PP 55    | 100 | 35 | 5.5  | 10  | 44      |
| PP 63    | 100 | 35 | 6.3  | 10  | 46      |
| PP 40 L  | 150 | 75 | 4.0  | 10  | 51      |
| PP 48 L  | 150 | 75 | 4.8  | 10  | 55      |
| PP 55 L  | 150 | 75 | 5.5  | 10  | 58      |
| PP 63 L  | 150 | 75 | 6.3  | 10  | 62      |
| PP 80 L  | 150 | 75 | 8.0  | 12  | 90      |
| PP 100 L | 150 | 75 | 10.0 | 12  | 108     |

# TAPARIA TOOLS LTD.



Head Office : 423 / 424, A-2, Shah & Nahar, Lower Parel (W), Mumbai - 400 013. & : 2493 8646 - 50  
 Fax : 91-22-2495 3230. • E-mail : sales@tapariatools.com • Web Site : http://www.tapariatools.com  
 Works : 52-B, M. I. D. C., Satpur, Nashik - 422 007. & : 2350 317 / 318 / 418 • Fax : 0253-2350740



An ISO-9001 Company