



MUNDIAL-4 **Vehicle Security & Keyless Entry System**

The Mundial-4 offers the latest in security and convenience technology. This feature-rich security/keyless entry system will deter even the most determined or sophisticated thief. Our state-of-the-art vehicle security platform offers unsurpassed vehicle protection that can only be offered by K-9's 30+ year legacy.

Features include :

- 2 Auxiliary Channel Output
- Silent Arm/Disarm
- 2-Stage Disarm
- 2 Remote Transmitters
- Door Activated Anti-Carjack
- Ignition Activated Anti-Carjack
- Transmitter Activated Anti-Carjack
- Starter Kill Relay & Socket
- Shock Sensor w/ Pre-warning
- Port For External Dual Zone Sensors
- Keyless Entry



K9 CLASSIC EDP **Vehicle Security & Keyless Entry System**

The K9 Classic EDP is a premium system that offers the latest features in convenience and safety. State-of-the-art design brings you maximum flexibility. The K9 Classic EDP includes a dual-zone shock sensor and starter interrupt in addition to its already impressive host of features.

Features include :

- 2 Auxiliary Channel Output
- Silent Arm/Disarm
- 2 Remote Transmitters
- Door/Ignition/Transmitter Activated Anti-Carjack
- Panic
- Port For External Dual Zone Sensors
- Keyless Entry



REC-12 **Deluxe Keyless Entry System**

The REC-12 is a premier keyless entry system with driver's priority unlock, 2 auxiliary channels, panic, starter interrupt output, coded override, dome light supervision, horn honk output, and a light flash output. It includes 2 stylish four button transmitters.

Features include :

- 2 four button transmitters
- Starter interrupt output
- Programmable coded override
- Valet switch assembly
- Dome light Supervision
- Light flash output
- Horn honk output
- 2 auxiliary outputs
- 39 programmable features

**AL-100DP
SECURITY UPGRADE FOR FACTORY KEYLESS ENTRY**



The AL-100DP upgrades an OEM remote keyless entry system to a full featured security system. It is the latest, compact generation of Omega's legendary AL-100 series for keyless upgrade system and is more flexible than ever! When incorporated with the vehicle's OEM keyless entry and doorlocking system's circuits, it arms and disarms from the lock and unlock buttons of the factory transmitters. Now, in addition to detecting lock and unlock signals, it can also be configured to monitor the OEM light flash wire. You can easily adapt to any vehicle! It includes all necessary harnesses, starter interrupt socket and relay, domelight supervision, flashing lights, horn honk or siren output, ignition controlled doorlocks, disarm upon trunk release from factory transmitter, a LED status indicator, and a valet switch.

Features Include :

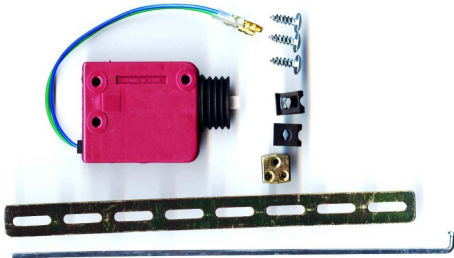
- Chirp Confirmation On/Off
- Doors Will Lock With Last Door Arming On/Off
- Last Door Arming On/Off
- Automatic Rearm
- Doors Lock With Automatic Re-arm
- Ignition Controlled Doorlocks On/Off
- Ignition & Door Anti-Carjacking
- Parking Light Override On/Off
- 3rd Channel Activation
- Fifteen Second Entry Delay On/Off

DOORLOCK ACCESSORIES



DS-2.4

Economy gun-style actuator converts manual doorlocks into power doorlocks for use with vehicle security systems. Two-wire reverse polarity operation; universal mounting hardware included.



DS-2SQ

Compact actuator converts manual doorlocks into power doorlocks for use with vehicle security systems. Two-wire reverse polarity operation; universal mounting hardware included.



DL-CABLE

This kit allows you to attach any of our doorlock actuators to any cable style door locking mechanism. It includes 1 bracket, 2 cable jacket clips, 1 cable clamp, and 1 hex wrench for installation.



AU-FD

Split pulse door lock or unlock adapter pre-wired 4-pin door lock plug converts the single negative door lock or unlock output pulse to a split pulse output allowing for the arming and disarming of factory security systems when an aftermarket security system is locked or unlocked or operates multiple circuit doorlock systems such as those associated with Child-Safety systems.

DOORLOCK ACCESSORIES



DLP-P3
Doorlock Output Interface

Pre-wired 3-pin doorlock plug converts negative doorlock outputs on Omega security and keyless entry system doorlock outputs to positive doorlock outputs. Provides output for locking and unlocking all doors. For positive pulse doorlocking systems only.



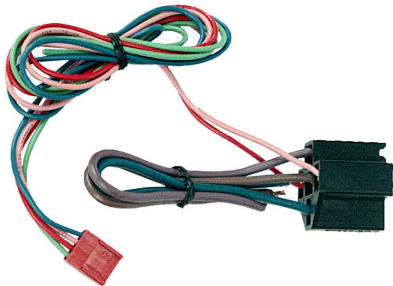
DLP-P4
Doorlock Output Interface

Pre-wired 4-pin doorlock plug converts negative doorlock outputs on Omega security and keyless entry system doorlock outputs to positive doorlock outputs. Provides output for locking and unlocking all doors. For positive pulse doorlocking systems only.



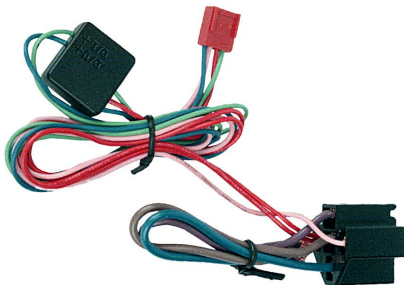
DLP-N3
Doorlock Output Interface

Pre-wired 3-pin doorlock interface harness. Allows direct connection of Omega security and keyless entry system doorlock outputs to negative pulse doorlock systems.



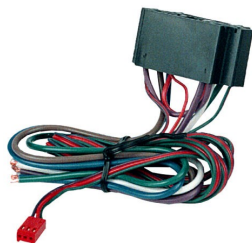
DLS-1N
Doorlock Output Interface

Pre-wired 4-pin doorlock plug with one pre-wired socket to interface Omega security and keyless entry system negative doorlock outputs to negative doorlock systems and include the driver's door priority unlock feature. Provides lock all doors, unlock driver's door only and unlock all doors output. For negative pulse doorlocks and vehicles having a 5-wire unlock driver's door priority.



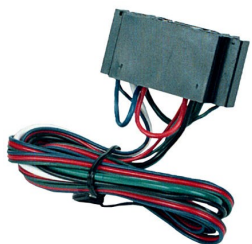
DLS-1P
Doorlock Output Interface

Pre-wired 4-pin doorlock plug with one pre-wired socket to interface Omega security and keyless entry system negative doorlock outputs to positive pulse doorlock systems and include the driver's door priority unlock feature. Provides lock all doors, unlock driver's door only and unlock all doors output. For positive doorlock systems and vehicles having a 5-wire unlock driver's door priority.



DLS
Doorlock Relay Socket

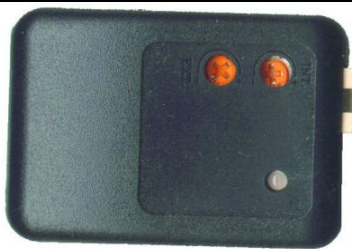
Pre-wired dual relay socket allows easy installation of optional relays to both the Omega security or keyless entry system, and the vehicle. Can be configured to operate 3-wire negative, 3-wire positive, and 5-wire reversal power doorlocking systems for lock and unlock by the Omega system. Two relays are required.



DLS-V
Doorlock Relay Socket For Vacuum System

Adapts the negative pulse doorlock outputs used by Omega security and keyless entry systems to control the vacuum doorlocking systems like those found on older Mercedes and Audio vehicles. Two relays are required.

SENSORS, PIN SWITCHES, & CONTACTS



AU-94TM
Miniature Dual Zone Proximity Sensor

The AU-94TM is designed to provide both internal and external zone protection for the vehicle. When the exterior zone is penetrated, a pre-warn signal is generated. When the interior zone is violated, the system immediately triggers.



AU-84TM
Dual Zone Shock Sensor

The AU-84TM is a miniature dual zone impact sensor that utilizes a piezo crystal element to detect shocks to the exterior of your vehicle. It's equipped with a Pre-warn output to chirp siren and warn thieves away. It's Pre-wired 4-pin plug allows easy connection to all Omega systems.



AU-EXP
Sensor Expansion Module

Allows for the addition of up to three different sensors to an Omega security system. Each input is diode isolated and has a trigger amplification circuit. It converts one auxiliary sensor port into three.



AU-45
Magnetic Reed Switch

Excellent choice for protecting sliding glass windows and truck bed covers. Water resistant and works at any angle.



AU-46
Mercury Tilt Switch

Commonly used to detect the opening of vehicle hoods or trunks. Waterproof and adjustable tilt angle.



AU-40
Sliding Door Contact Switch

Perfect for adding door locks to sliding doors in vans and mini-vans.



AU-42 Short Pin Switch
3/8" Metal Shaft with Metal Housing. Fits 1/4" hole.



AU-43 Long Pin Switch
3/4" Metal Shaft with Metal Housing. Fits 1/4" hole.



AU-44 Adjustable Pin Switch
1" Black Plastic adjustable shaft with Metal Housing. Fits 5/16" hole.



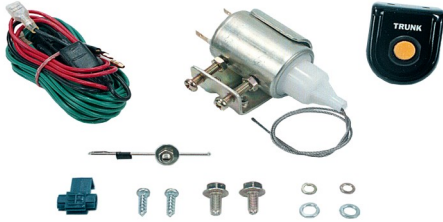
AU-47 Adjustable Pin Switch
1 1/16" Black Plastic adjustable shaft with adjustable Metal Housing. Fits 5/16" hole.

SECURITY ACCESSORIES



AU-SOCKET-HD

Pre-wired 3-wire relay socket for starter interrupt with 14 gauge 13" wires.



TR-2 TRUNK / DOOR RELEASE KIT

For vehicles without factory-equipped electric trunk release. Use this kit to add electric power trunk release to remote vehicles security system's capabilities. Also includes dash-mount switch to activated system from within the vehicle. Motor features 11 lb pull.



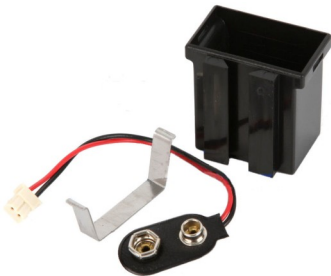
AU-93 POWER WINDOW ROLL-UP MODULE

This interface takes the "ground when armed" output of any Omega security system and utilizes it to roll up or down the electric power windows of the vehicle every time the security system is armed. The AU-93 controls two windows in one direction 5-wired universal connections allow for reverse polarity window roll-up position. Two built-in 30 amp relays fits most vehicles with existing power windows.



AU-93 DELUXE WINDOW ROLL-UP MODULE

This interface takes either the "ground when armed" output of any security system or a momentary pulse and utilizes it to roll up or down the electric power windows of the vehicle. The AU-93-4 controls four windows in one direction. Fully adjustable load resistance circuit. Negative or positive activation input. 5-wire universal connections allow for reverse polarity window roll-up operation.



AU-BATPACK

Clip on Battery Holder and harness. Designed for use with Omega products as a backup battery. Compatible systems must be equipped with a backup battery port.

SIRENS



AU-70SL SINGLE/MULTI-TONE SIREN

Standard six tone, 20 watt siren that has a loop that changes to a single tone when cut.



AU-74M Backup Battery Multi-Tone Siren

Six tone, 20 watt siren with selectable, loud or soft chirps. Built-in NiCad battery that keeps the siren sounding even if the wires are cut. Includes 2 keys for enabling/disabling the backup battery circuit.